

BC9302S Series LED Explosion Proof Light (Flood Light)



Beam angle:80°

Ex marking: Ex db op is IIC T5/T6 Gb
Ex tb op is IIIC T95°C/T80°C Db

Hazardous Gas Zone 1 and Zone 2
Dangerous dust Zone 21 and Zone 22

Main Specification

| | |
|---------------------------|---------------------------------|
| Rated voltage (V) | 100~240VAC/120~270VAC |
| | 20-38VAC/ 20~48VDC |
| Rated frequency | 50Hz / 60Hz |
| Light source | LED |
| Life time(h) | 50,000h |
| CCT | 5000K(3000K/4000K optional) |
| Screw thread | G3/4, M20, M25, NPT3/4", NPT1/2 |
| Leading-in cable diameter | φ 9mm~ φ 14mm |
| Dimension (mm) | φ 240×220 |
| Net weight (kg) | 5 |

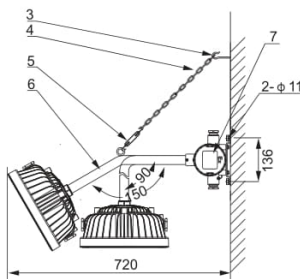
Ordering reference

| Ordering reference | Picture | Rated wattage (W) | Light output (lm) | Space height ratio | Mounting height(m) | Light distribution curve (1000cd/lm) | Replace to |
|--------------------|---------|-------------------|-------------------|--------------------|--------------------|--------------------------------------|-------------------|
| | | | | | | | Metal halide lamp |
| BC9302P-L30-80° | | 30W | >3300 | 1.25 | 2~5m | | 70W |
| BC9302P-L40-80° | | 40W | >4400 | | | | 100W |
| BC9302P-L50-80° | | 50W | >5500 | | 4~6m | | 100W |
| BC9302P-L60-80° | | 60W | >6600 | | | | 150W |

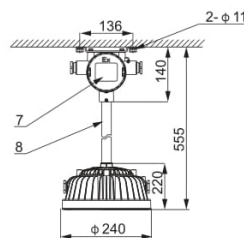
*The lamp can be matched with a milk white sphere lens: 200°

Drawing of dimension (Dimensions in mm)

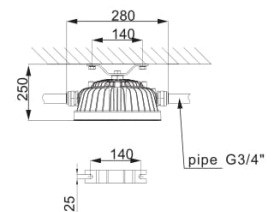
Side wall mounting 150°/90°



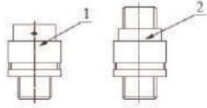
Pole mounting



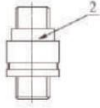
Ceiling mounting



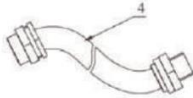
**BC9302S Series
LED Explosion Proof Light (Flood Light)**



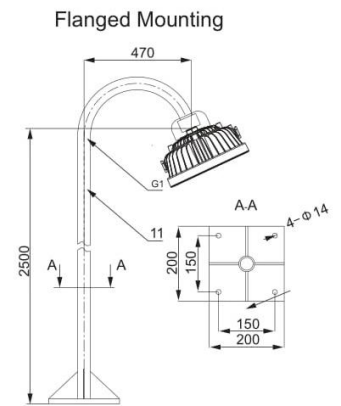
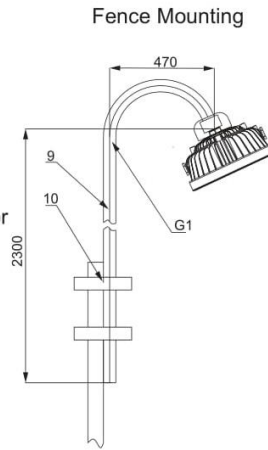
Explosion proof connector
G3/4" Female- Male



Explosion proof connector
G3/4" Male- Male



Connecting pipe
G3/4" Female- Male



| Number | Model specifications | Quantity | Note | Number | Model specifications | Quantity | Note |
|--------|---------------------------|--------------------------|---|--------|------------------------------|----------|---|
| 1 | Explosion proof connector | Reference mounting image | G3/4" Female- Male | 7 | Explosion proof junction box | 1 | |
| 2 | Explosion proof connector | Reference mounting image | G3/4" Male- Male | 8 | G3/4" pole | 1 | The length in accordance with the request of the customer |
| 3 | Expansion screw hook | 1 | | 9 | Fence type lighting pole | 1 | |
| 4 | Chain | 1 | G3/4" | 10 | U-bolts | 2 | |
| 5 | C-C screw buckle | 1 | G3/4" Female- Male | 11 | Flange type lighting pole | 1 | |
| 6 | G3/4" bend pipe | 1 | 90 degrees and 150 degrees are optional | 12 | | | |